



MANSION
YACHTS



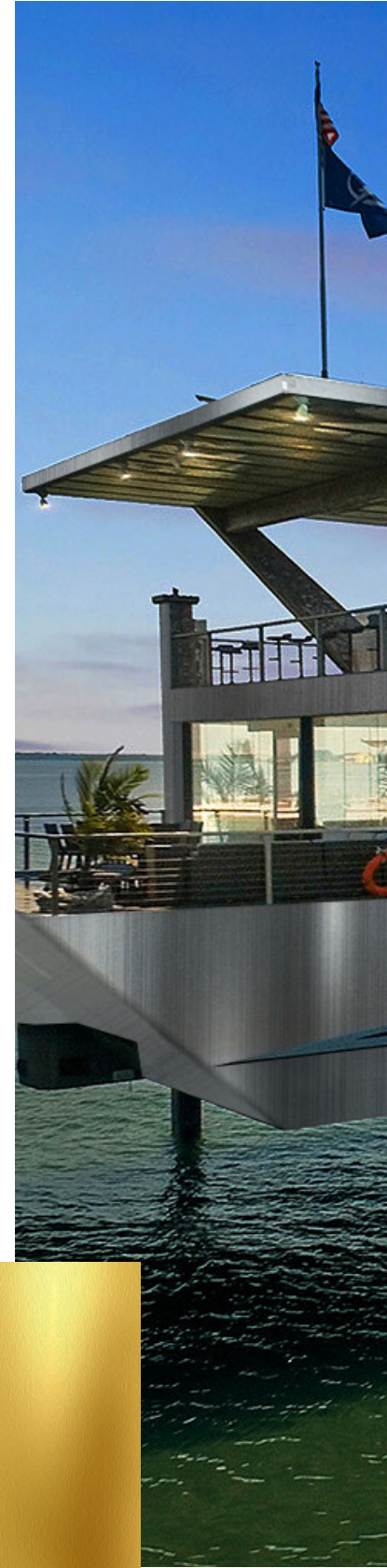
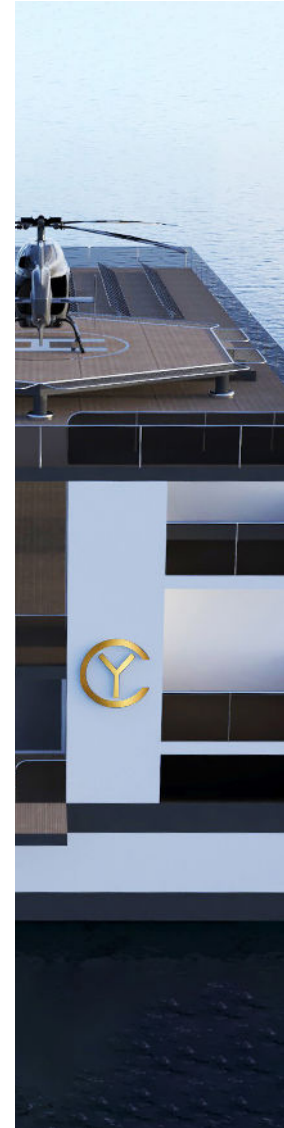
- WHERE PLEASURE MEETS LUXURY -

ABOUT US

The first Mansion Yacht was created to provide a unique “Beach Front Mansion Yacht Experience” on your favorite beach but with the ability to move to another beach as desired. Whether you want to go to Winter-Biscayne Bay, the Bahamas, Summer-New Port, or even the Hamptons.

Several versions of this all new class of Mansion Yacht have been designed for use as Mobile and Stationary Restaurant/Bars, Boutique Hotels, Marinas, Clubhouses, and Event Boats. Explore through our digital renderings and see if there is design that fits your use.

Please contact us for information on our private event schedule now. The Mansion Yacht Experience is truly like no other!





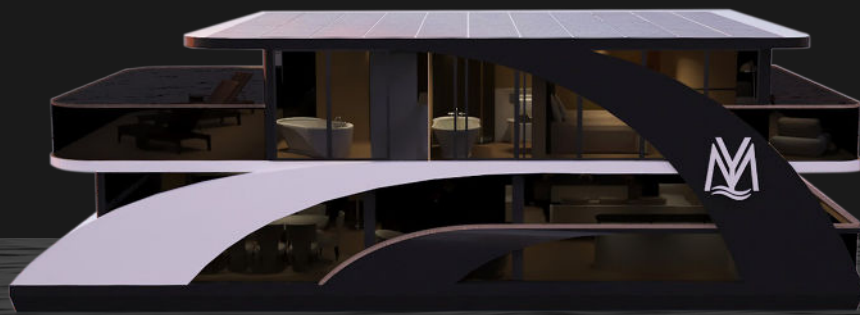
CAPABILITIES

- 4 Hydraulic Caissons Feet capable of lifting 1 million pounds each.
- Reinforced Water Tight Steel bulkheads
- 100 Horsepower 360 Degree Bow Thruster
- Twin Engine Power Paackage

GROUNDING

- 4 Stabilizing pads with 18ft of stroke
 - 4 Million pounds of load lifting capacity
 - 3 Leg stabilizing capability
 - AntiTwist-Frame Construction
 - 4 Point Grounding technology ultimate leveling and stability
 - Conservation- All New Non-Invasive Anchoring Technique
 - Easy Instant Grounding & Vessel Positioning
-

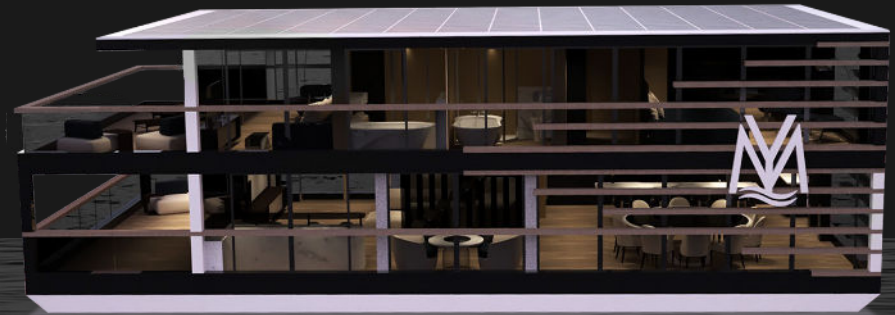
MODELS



** Size is not to scale*

CATAMARAN

- 50 x 25 -



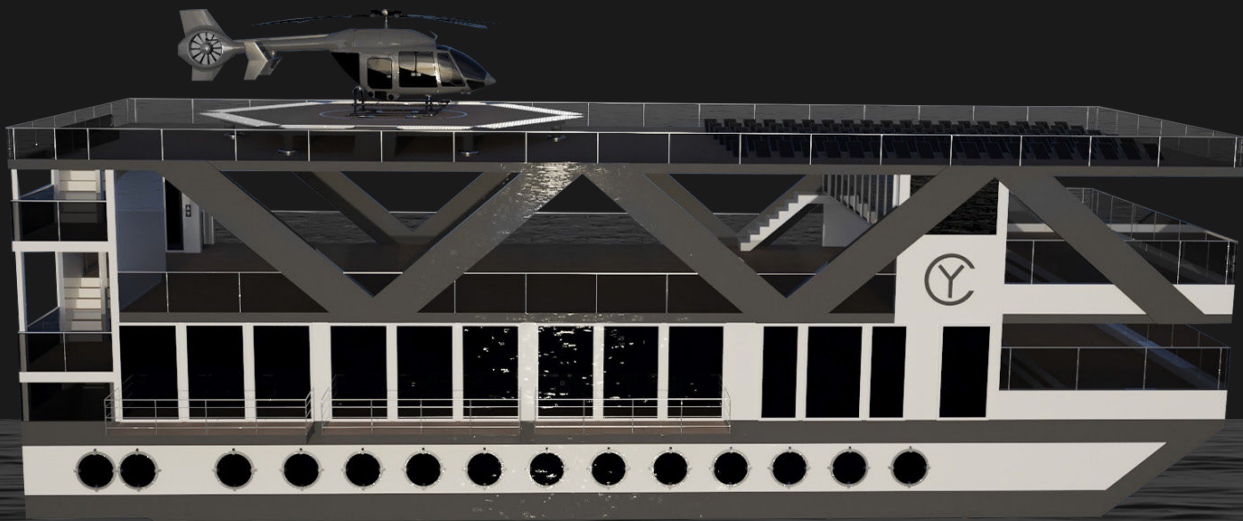
** Size is not to scale*

MANSION

- 50 x 30 -



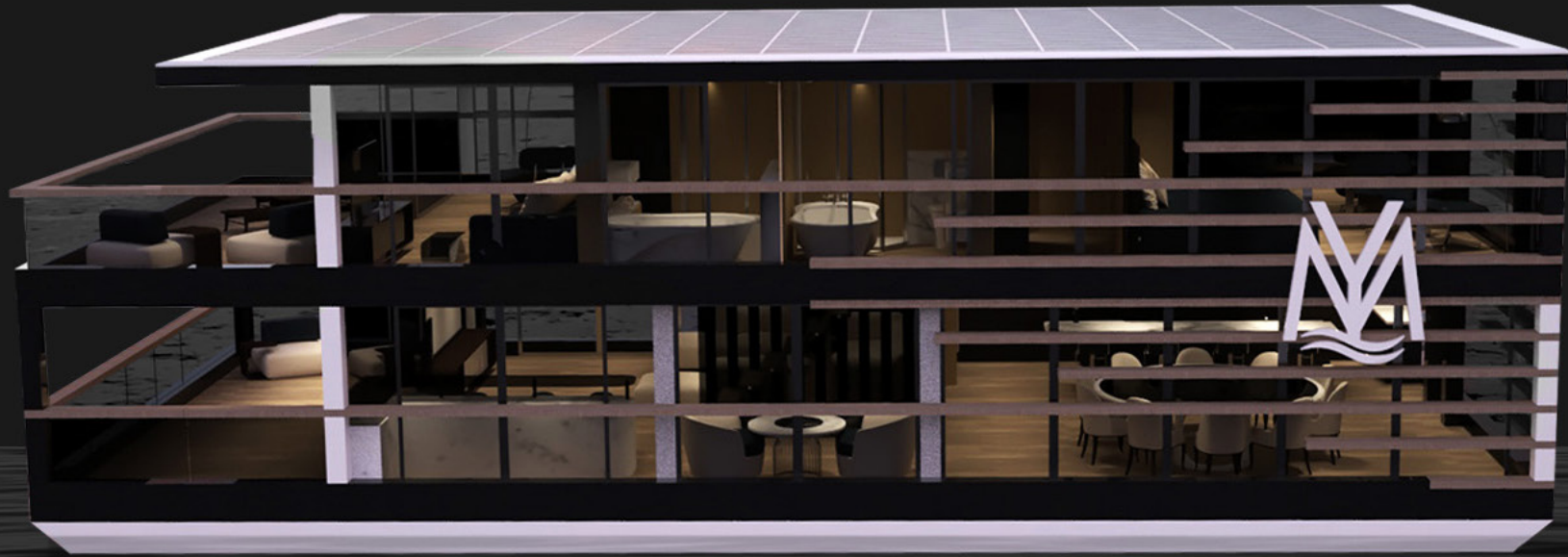
MANSION YACHTS



** Size is not to scale*

RESORT

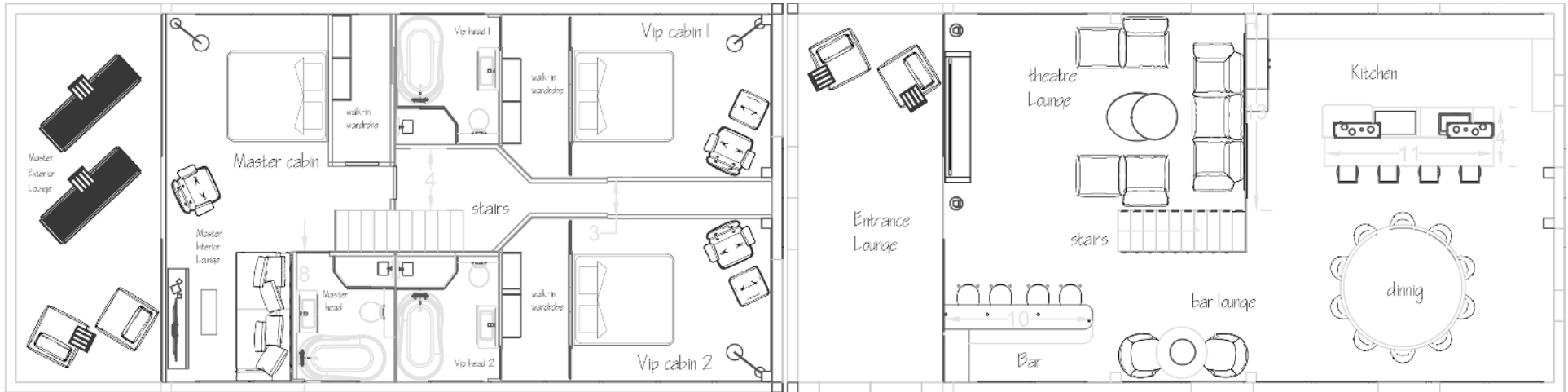
- 120 x 42 -



50 x 30
MANSION

UPPER DECK

MAIN DECK



- SPECIFICATIONS -

GENERAL CONSTRUCTION

50' – 0' LOA

30' – 0" Beam

3' – 0" Draft

6,000 Total sq ft

Material – Composite & Aluminium

MAIN DECK

Kitchen, Living, Dining, Theater, Lounge,
and Bar Lounge (1,200 sq ft Interior)

Entrance Lounge (300 sq ft Exterior)

UPPER DECK

Master Suite with Private Bath and
Walk-In Wardrobe (450 sq ft)

Master Exterior Lounge and Helm Pod
(300 sq ft)

2x - VIP Suite with Private Bath and
Walk-In Wardrobe (215 sq ft each)

BELOW DECK

Fuel: 1,000 US Gallons

Fresh Water: 2 x 2000 US Gallons

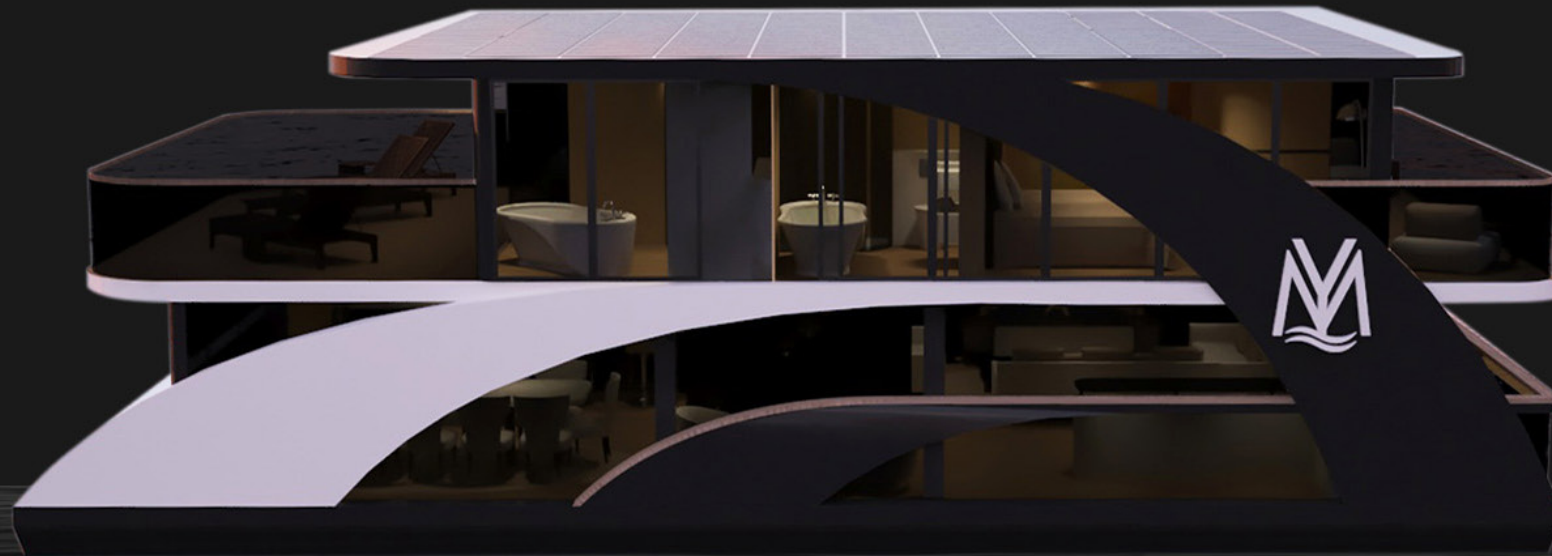
Main Engines: 2x Cummins QSM

6.7-550HP Engines

2x - Generator: 17 KW (60Hz)

20 GPH Water Maker

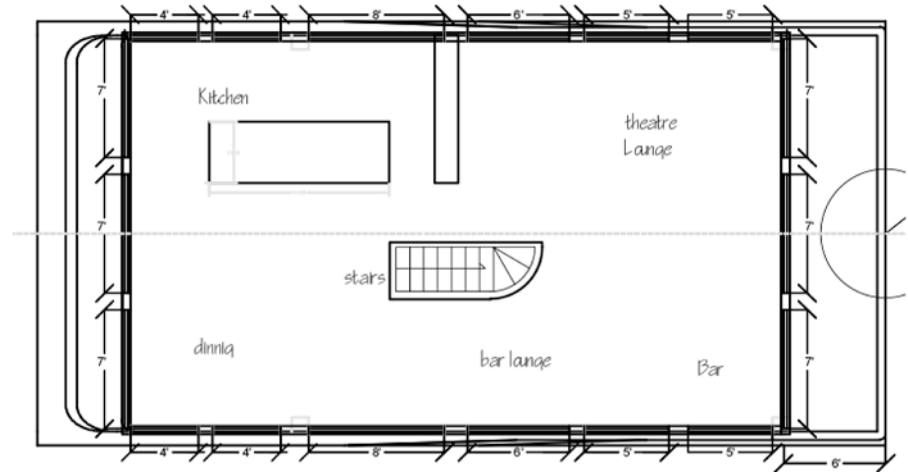
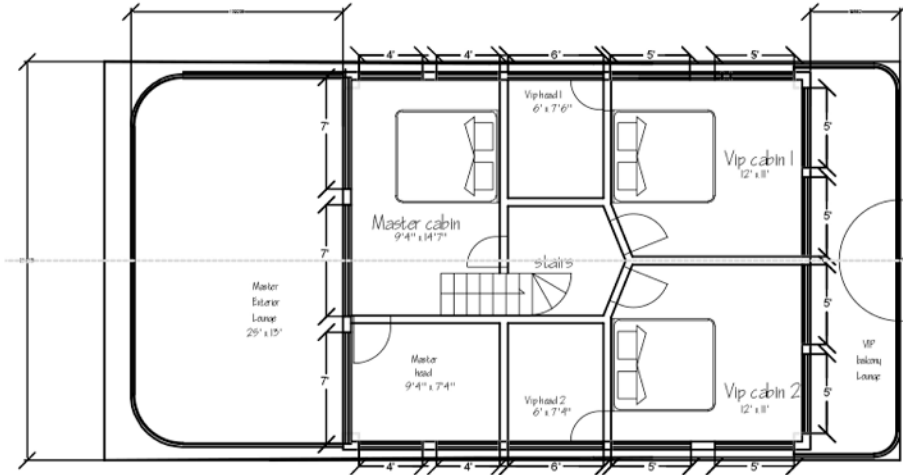
Storage



50 x 25
CATAMARAN

UPPER DECK

MAIN DECK



- SPECIFICATIONS -

GENERAL CONSTRUCTION

50' – 0' LOA

25' – 0" Beam

3' – 0" Draft

5,000 Total sq ft

Material – Composite & Aluminium

MAIN DECK

Kitchen, Living, Dining, Theater, Lounge,
and Bar Lounge (975 sq ft Interior)

UPPER DECK

Master Suite with Private Bath (208 sq ft)

Master Exterior Lounge and Helm Pod
(325 sq ft)

2x - VIP Suite with Private Bath
(177 sq ft each)

VIP Exterior Lounge (141 sq ft)

BELOW DECK

Fuel: 1,000 US Gallons

Fresh Water: 1000 US Gallons

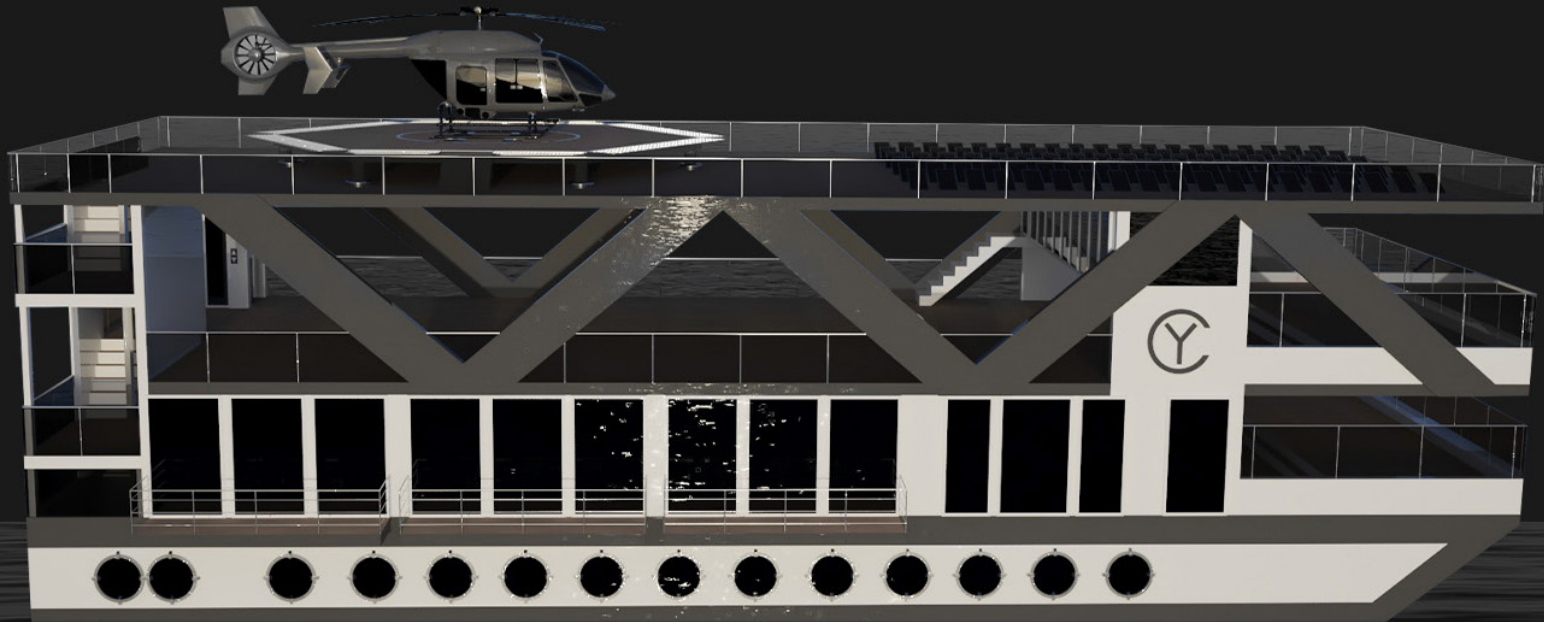
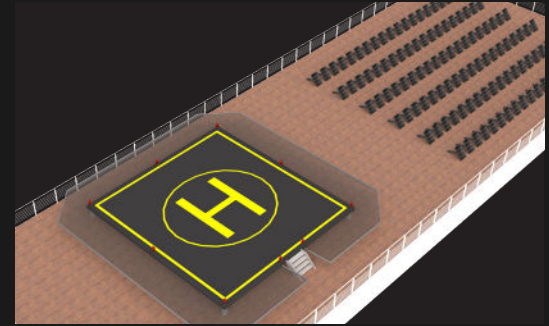
Main Engines: 2x Cummins QSB

11-705HP Engines

2x - Generator: 17 KW (60Hz)

20 GPH Water Maker

Storage



120 x 42
RESORT

- SPECIFICATIONS -

GENERAL CONSTRUCTION

120' – 0' LOA

42' – 0" Beam

4' – 0" Draft

20,160 Total sq ft

Material – Stainless Steel

DECK 1

5,040 Total sq ft

10' Ceiling Height

4' Wide Center Hallway (Bow to Stern)

9 - 18' x 18' Suites with Private Baths
(324 sq ft)

42' x 16' Bow Equipment, Storage Area
(672 sq ft)

2x - Elevators

BOW EQUIPMENT

6,000g Fresh Water Storage Tank

2x - 1" Freshwater Pumps

2x - 50 GPH Water Makers

DECK 2

10' Above Waterline

5,040 Total sq ft

10' Ceiling Height

42' x 8" Rear Deck Aft with Stairs Up
(336 sq ft)

6 - 20' x 18' Suites with Private Baths
(360 sq ft)

42' x 24' Salon, Kitchen, and Dining Area
(1,008 sq ft)

42' x 24' Front Deck (1,008 sq ft)

DECK 4

35' Above Waterline

5,040 Total sq ft

10' Ceiling Height

8' x 42' Deck with Stairs Down (336 sq ft)

108' x 42' Open, Uncovered Deck with Hot
Tub, Umbrellas, Sun Deck Chairs,
Generator Pods, Leg Pods, Crane, Boat &
Toy Storage, and a 1/2 Bath (4,536 sq ft)

DECK 3

21' Above Waterline

5,040 Total sq ft

10' Ceiling Height

88' x 42' x 14' Deckhouse (3,696 sq ft)

8' x 42' Rear Deck Stairs Up (335 sq ft)

78' x 42' Open, Covered Deck with
Outdoor Kitchen, Dining, and Viewing
(3,276 sq ft)

10' x 42' Elevated Helm, Captain's

Quarters, Nav Equipment (420 sq ft)

24' x 42' Observation Deck (1,008 sq ft)

LEGS

4x - 38' x 24' x 1/2" SS Casings

4x - 32' x 10" Hydraulix Rams with
25' of Stroke

4x - Hydraulic Pumps with Electric
Motors, Controls, and Hydraulic
Reservoirs



Contact Us

1-855-472-2496

info@mansionyachts.com

1124 Lake View Rd, Clearwater, FL 33756